

Floor plans: *Studios*

The new St. Clare - Newport



*Integrated loving care for seniors,
offered in the presence of grace*

Independent Living

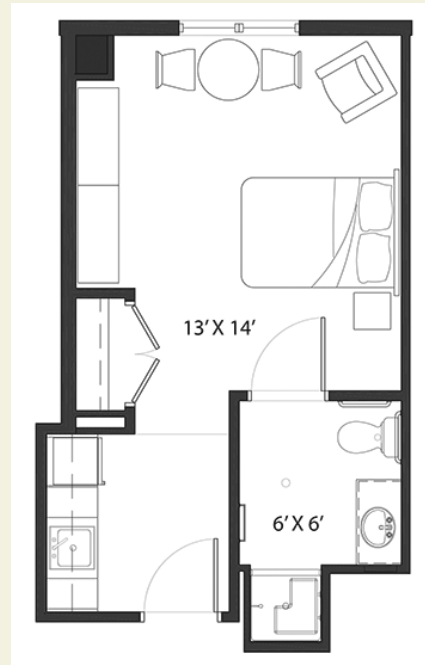
- Studio, 1-bed and 2-bedroom apartments
- Sun room
- Therapy pool*
- Salon and spa with massage services
- Café and patio
- Media room and library
- Dining room and lounge with views of Newport Harbor
- Security and parking provided
- Fitness center

**coming in Phase 2*

Assisted Living

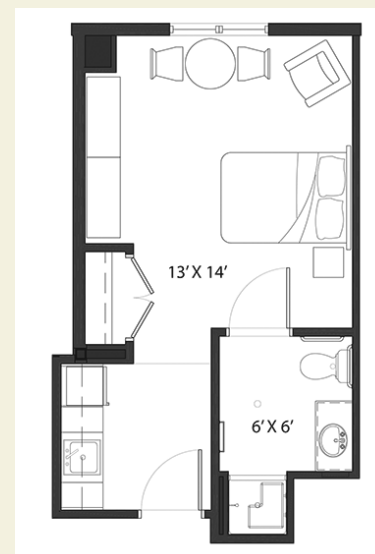
All of the independent living amenities listed above, plus:

- Housekeeping and personal laundry
- Personal assistance with activities of daily living
- Specialized secure memory care
- Complimentary transportation
- Priority placement in skilled nursing



Studio "A"

314-414 s.f.



Studio "B"

319-377 s.f.

RESERVE YOUR SPACE TODAY.

For more information call Colleen Curran at 401.849.3204

or email reserve@stclarenewport.org

A HEALTH CARE AGENCY OF THE ROMAN CATHOLIC DIOCESE OF PROVIDENCE
A CARELINK PARTNER

St. Clare-Newport
*Integrated loving care for seniors,
offered in the presence of grace*

309 Spring Street
Newport, Rhode Island, 02840
401.849.3204 fax 401.849.5780



stclarenewport.org

Floor plans: *One bedroom*

The new St. Clare - Newport



ST. CLARE
NEWPORT

*Integrated loving care for seniors,
offered in the presence of grace*

Independent Living

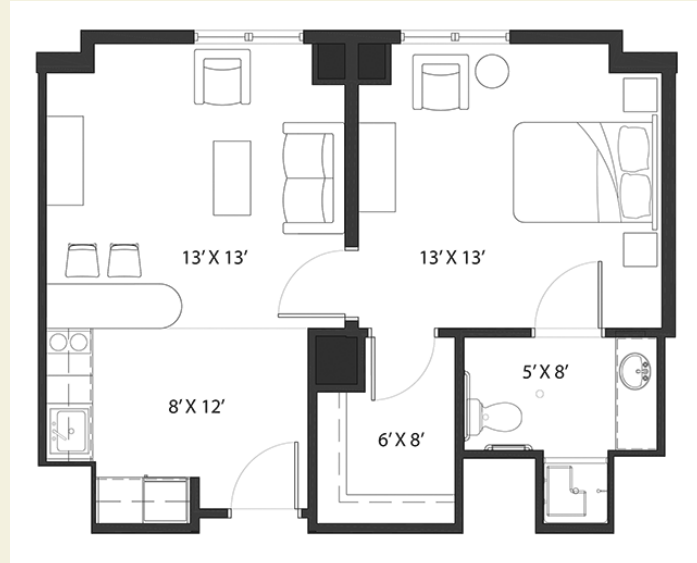
- Studio, 1-bed and 2-bedroom apartments
- Sun room
- Therapy pool*
- Salon and spa with massage services
- Café and patio
- Media room and library
- Dining room and lounge with views of Newport Harbor
- Security and parking provided
- Fitness center

**coming in Phase 2*

Assisted Living

All of the independent living amenities listed above, plus:

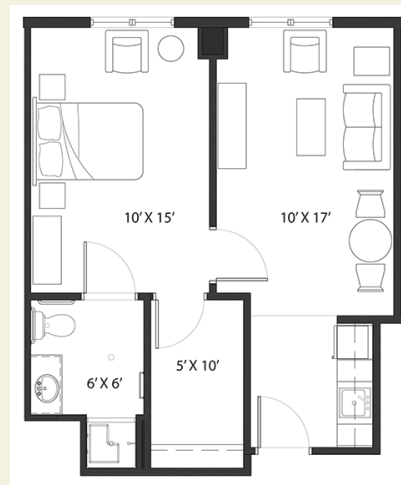
- Housekeeping and personal laundry
- Personal assistance with activities of daily living
- Specialized secure memory care
- Complimentary transportation
- Priority placement in skilled nursing



One Bedroom

"A"

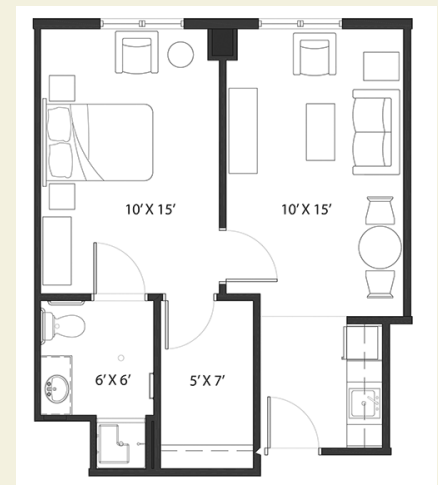
520-569 s.f.



One Bedroom

"B"

522-548 s.f.



One Bedroom

"C"

519-528 s.f.

RESERVE YOUR SPACE TODAY.

For more information call Colleen Curran at 401.849.3204

or email reserve@stclarenewport.org

A HEALTH CARE AGENCY OF THE ROMAN CATHOLIC DIOCESE OF PROVIDENCE
A CARELINK PARTNER

St. Clare-Newport
*Integrated loving care for seniors,
offered in the presence of grace*

309 Spring Street
Newport, Rhode Island, 02840
401.849.3204 fax 401.849.5780



stclarenewport.org

Floor plans: *Two bedroom*

The new St. Clare - Newport



ST. CLARE
NEWPORT

*Integrated loving care for seniors,
offered in the presence of grace*

Independent Living

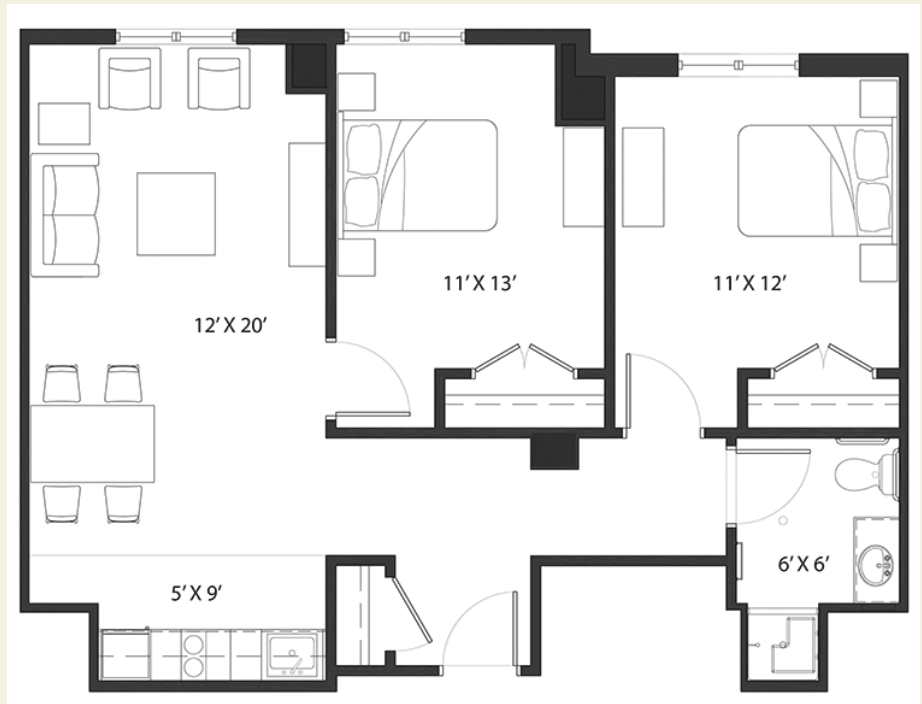
- Studio, 1-bed and 2-bedroom apartments
- Sun room
- Therapy pool*
- Salon and spa with massage services
- Café and patio
- Media room and library
- Dining room and lounge with views of Newport Harbor
- Security and parking provided
- Fitness center

**coming in Phase 2*

Assisted Living

All of the independent living amenities listed above, plus:

- Housekeeping and personal laundry
- Personal assistance with activities of daily living
- Specialized secure memory care
- Complimentary transportation
- Priority placement in skilled nursing



Two Bedroom

810-825 s.f.

RESERVE YOUR SPACE TODAY.

For more information call Colleen Curran at 401.849.3204

or email reserve@stclarenewport.org

A HEALTH CARE AGENCY OF THE ROMAN CATHOLIC DIOCESE OF PROVIDENCE
A CARELINK PARTNER

St. Clare-Newport
*Integrated loving care for seniors,
offered in the presence of grace*

309 Spring Street
Newport, Rhode Island, 02840
401.849.3204 fax 401.849.5780



stclarenewport.org

Floor plans: *Memory care*

The new St. Clare - Newport

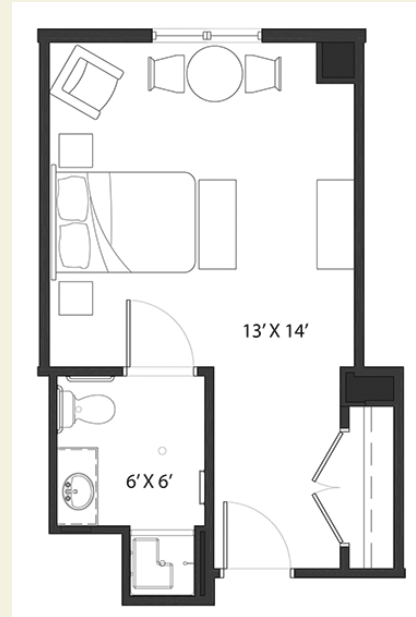


ST. CLARE
NEWPORT

*Integrated loving care for seniors,
offered in the presence of grace*

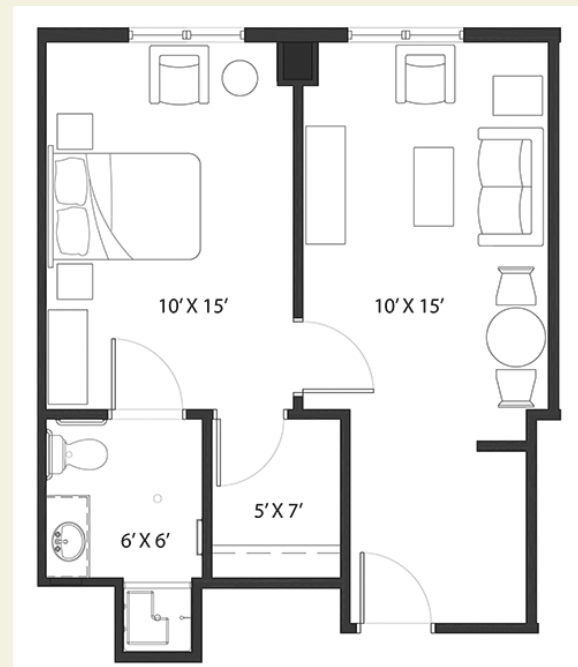
Memory Care

- Studio, 1-bedroom
- Therapy pool*
- Salon and spa with massage services
- Café and patio
- Security
- Fitness center
- *coming in Phase 2*
- Housekeeping and personal laundry
- Medication management
- Personal assistance with activities of daily living
- Specialized secure memory care
- Complimentary transportation
- Priority placement in skilled nursing



Memory Care Assisted Living Studio

314-377 s.f.



Memory Care Assisted Living One Bedroom

519-528 s.f.

RESERVE YOUR SPACE TODAY.

For more information call Colleen Curran at 401.849.3204

or email reserve@stclarenewport.org

A HEALTH CARE AGENCY OF THE ROMAN CATHOLIC DIOCESE OF PROVIDENCE
A CARELINK PARTNER

St. Clare-Newport
*Integrated loving care for seniors,
offered in the presence of grace*

309 Spring Street
Newport, Rhode Island, 02840
401.849.3204 fax 401.849.5780



stclarenewport.org